

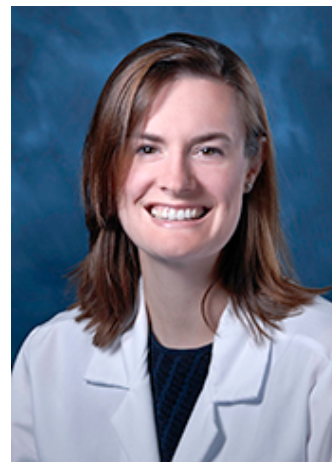


National Institutes of Health  
Office of Research on Women's Health

**Bobbie J. Rimel, M.D. (she/her)**

**Vice Chair, Protocol Review and Monitoring Committee, Samuel Oschin Comprehensive Cancer Institute (SOCCI), Cedars-Sinai Medical Center**

**Associate Director, Gynecologic Oncology Clinical Trials, Cedars-Sinai Medical Center**



Dr. Rimel's research interests focus on barriers to clinical trial enrollment and the use of digital processes to improve access and comprehension of clinical trials. Dr. Rimel developed and implemented Cedars-Sinai's first patient-facing online registry for women interested in participating in research, for which she was awarded a Human Research Protection Award of Excellence for Best Practice by the Health Improvement Institute in 2013. She is currently developing a cohort-building software for clinical trial accrual through the Clinical Research Office at Cedars-Sinai Samuel Oschin Comprehensive Cancer Institute (SOCCI) and the technology company Deep 6. Additionally, Dr. Rimel was very involved in the large Phase III NOVA study—which led to a *New England Journal of Medicine* publication in 2016, as well as several conference abstracts.

Dr. Rimel is active in writing trials for NRG Oncology, is the Site Director for medical student rotations in the Department of Obstetrics and Gynecology at Cedars-Sinai Medical Center, and maintains a clinical practice. She completed medical school at the Duke University School of Medicine, residency in obstetrics and gynecology at Northwestern University, and a fellowship in gynecologic oncology at Washington University in St. Louis.